

No matter who you are,
you're welcome here.

Touro has been serving the New Orleans community for over 167 years, and today we are the city's only community-based, non-profit, faith-based hospital.

And we're more than just where babies come from. As a full-service hospital, we offer everything needed to care for our city, including surgical, intensive care, skilled nursing inpatient services, inpatient and outpatient rehab services, a 24-hour Emergency Department, as well as specialized care through our Woldenberg Village retirement community.



Manny Linares
President & Chief Executive Officer
Touro

“Touro is a hospital with a rich history and an important legacy committed to serving New Orleans. Our patients and community can count on our ongoing commitment to their health and well-being.”

Services

- Cancer Care
- Diabetes Care
- Emergency Care
- Family Birthing Center
- Heart and Vascular Care
- Imaging
- Orthopedic Care
- Respiratory Care
- Rehabilitation
- Senior Care
- Surgery
- Urology
- Women's Health
- Wound Care

Location

Main Campus
1401 Foucher St.
New Orleans, LA 70115
504.897.7011
touro.com

Touro Rehabilitation
3715 Prytania St.

Touro Imaging Napoleon
2929 Napoleon Ave.



Our history and growth

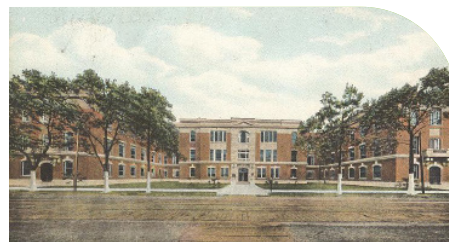
1852

Founded in 1852, Touro Infirmary is New Orleans' only community-based, non-profit, faith-based hospital.



1929

In 1929, Touro was one of the first hospitals in the United States to have a physical therapy department paving the way for the recognized Touro Rehabilitation Center.



2009

Touro and Children's Hospital partner to form LCMC Health, a non-profit, community-based system providing comprehensive care at every stage of life.



Subsidiaries

Touro clinics

At Touro, our outpatient clinics offer care in a wide range of specialties with convenient locations throughout the Greater New Orleans area. Our medical staff consists of 94 providers specializing in cancer care, general surgery, heart care, primary care, pulmonology, and women's health.

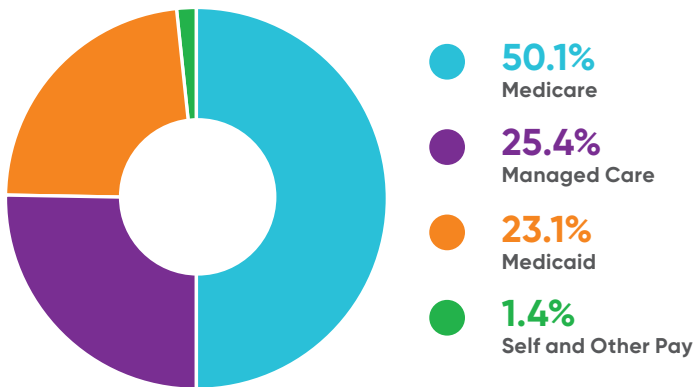
Touro at Home

The Medicare-certified, hospital-based home health agency provides care to patients in their homes in coordination with their physicians.

Woldenberg Village

Woldenberg Village, a premiere full-service retirement community, offers a variety of living accommodations, amenities, and programs to meet the varied needs of seniors. Woldenberg is rated as a 5-star nursing home by the Centers for Medicare & Medicaid Services (CMS).

Payer mix



Awards & accreditations

The Joint Commission Accredited
Commission on Accreditation of Rehabilitation Facilities (CARF)
accredited for:

- Comprehensive Integrated Inpatient Rehabilitation
- Spinal Cord System of Care
- Brain Injury Rehabilitation
- Amputation Specialty Program
- Stroke Specialty Program
- Cancer Rehabilitation Specialty Program
- Advanced Certification for Primary Stroke Centers by The Joint Commission
- The Joint Commission's Gold seal of Approval for Chest Pain Certification
- Get with the Guidelines® Stroke Gold Plus Recognition and Target: Stroke Honor Role Elite Plus by the American Heart/American Stroke Association
- Commission on Cancer 2017 Outstanding Achievement Award Recipient
- Touro Imaging Center accredited in MRI and CT from the American College of Radiology (ACR)
- Touro Women's Imaging Center designated a Breast Imaging Center of Excellence by the American College of Radiology (ACR)
- American Institute of Ultrasound in Medicine (AIUM) accredited in the areas of Obstetric-First Trimester, Obstetric-Second Trimester, Obstetric-Third Trimester.
- Baby Friendly Designated Facility
- Blue Distinction Center for Maternity Care by Blue Cross Blue Shield of Louisiana
- The GIFT Designation for Breastfeeding Quality
- Radiation Oncology Gold-Seal Accreditation by the American College of Radiology (ACR)
- Silver Accredited Geriatric Emergency Department by the American College of Emergency Physicians
- Blue Distinction Center for Knee and Hip Replacement
- Accredited by the College of American Pathologists

Touro by the numbers



Total economic impact



Source: information annualized based on December 31, 2019 data available.